

LIFE INFINITE

Works by 30 Korean American Diaspora Artists

The Korean Cultural Center Washington, D.C. proudly presents Life Infinite, a group exhibition featuring evocative works by 30 Korean American artists who represent the great diversity of Korean diaspora experiences in America, opening Wednesday, Jan. 11, 2017. Working across a wide array of mediums and styles, each artist selected signature works that express their inner spiritual development based on the infinite inspiration of nature and life. The diverse collection that comprises Life Infinite includes East Asian traditional painting, contemporary visual art, calligraphy, metal craft, and sculpture.

This special exhibition also commemorates Korean American Day on January 13, designated by the U.S. Congress as an annual recognition of the contributions to American society and culture by Korean Americans for more than a century.

Participating artists

Amy Kyungae Kim, Barbara Yoosooja Han, Bok Im Kim, Eunhee Dickerson, Eunjeon Kim, Eunmee Chung, Hwangbo Han, Hyun Chough, In Sook Lee, Irene Myounghee Yi, Jihee Kang, Junghwa Kim Paik, Joan Joungju Yi, Kisoon Griffith, Komelia Okim, Kwang Ho Kim, Kyungsuk Lee, Min Sun Oh, Mi-Sook Hur, Myoung Won Kwon, Myungsook Ryu Kim, Ok Ji Chung, Serena Yeo, Sookkyung Park, Sophia Joung, SunJin-Leaa Lee, Sunmi Shin, Wonju Seo, Yanghee Kim Lee, Yeong-Hi Paik

The Korean Cultural Center Washington, D.C. at the Embassy of the Republic of Korea is dedicated to strengthening Korea-US ties through a broad variety of public programs and support for local events in the Capital area. The KCCDC Art Gallery promotes cultural exchange between Korea and the United States by presenting Korean art, bringing East and West together. The space is approximately 1,200 square feet. Divided into two exhibition halls, the gallery accommodates various types of art, including painting, photography, installation, sculpture and media art.

The Korean Cultural Center Gallery Hours: Monday-Friday, 9am-noon & 1:30pm-5:30pm

Korean Cultural Center Washington, D.C. 2370 Massachusetts Avenue, NW Washington DC 20008

www.koreacultureDC.org



Amy Kyungae Kim, Barbara Yoosooja Han, Bok Im Kim, Eunhee Dickerson, Eunjeon Kim, Eunmee Chung, Hwangbo Han, Hyun Chough, In Sook Lee, Irene Myounghee Yi, Jihee Kang, Junghwa Kim Paik, Joan Joungju Yi, Junghwa Kim Paik, Kisoon Griffith, Komelia Okim, Kwang Ho Kim, Kyungsuk Lee, Min Sun Oh, Mi-Sook Hur, Myoung Won Kwon, Myungsook Ryu Kim, Ok Ji Chung, Serena Yeo, Sookkyung Park, Sophia Joung, SunJin-Leaa Lee, Sunmi Shin, Wonju Seo, Yanghee Kim Lee, Yeong-Hi Paik

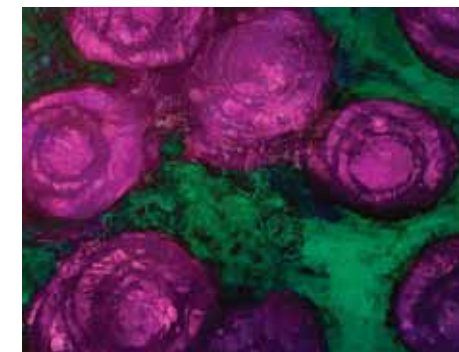


LIFE INFINITE

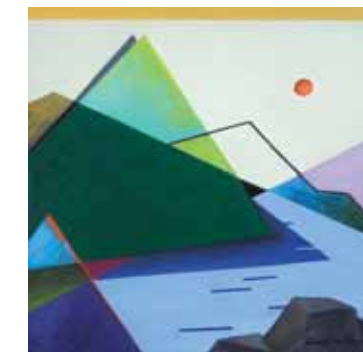
1.11 - 1.26, 2017 Opening Reception: Wed. Jan. 11 @ 6pm

Hours: Monday-Friday, 9:00am-noon & 1:30pm-5:30pm Tel: 202-939-5688

Korean Cultural Center Washington, D.C. 2370 Massachusetts Avenue, NW Washington DC 20008



Sophia Joung
"Zest I", Bunche, Suckche on Hanji, 14"x11", 2016



Yeong-Hi Paik
"View from Train II", Oil on canvas, 24" x 24", 2015



Yanghee Kim Lee
"Dimensional Progression II", Mixed Media, 23"x 38", 2016



Wonju Seo
"After A Storm", Korean silk, silk thread 40" x 40", 2009



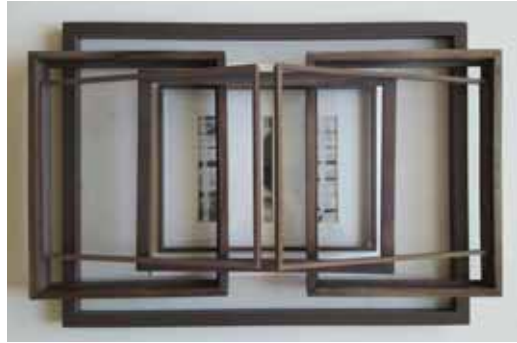
Mi-Sook Hur
"Springtime-2", Sterling silver, enamel on copper, stainless steel pin, 1 7/8"x 2 1/2" x 3/8", 2013



Sunmi Shin
"Prosperity", Mixed Media, 24" x 48", 2014



SunJin-Leaa Lee
"Journey-visitor", Korean water colored on silk, metal, mixed media 17" x 14" x 1.6", 2009



Amy Kyungae Kim
"Door", Oil on canvas, 27" x 18", 2015



Hyun Chough
"Psalm 118: 16-17", Copper, Enamel on Wood
18 1/4" W x 16 1/4"H x 2 1/2" D, 2015



Irene Myounghee Yi
"Flowering", Oil on canvas, 36" x 36"
2015



Joan Joungju Yi
"Circle Times Four", Oil on Canvas
31" x 31", 2013



Komelia Okim
"Through the Space 2"
Pendent 24K yellow gold plated
on Silver, 2.25"W x 3"H x 0.25"D
2014



Kisoon Griffith
"Blue Jean", Acrylic, 34" x 26"
2014



Barbara Yoosooja Han
"Sun bathing at Ocean city", Oil on canvas, 36" x 48"
2014



Sookkyung Park
"Nostalgia", Oil on
canvas, 58" x 19", 2015



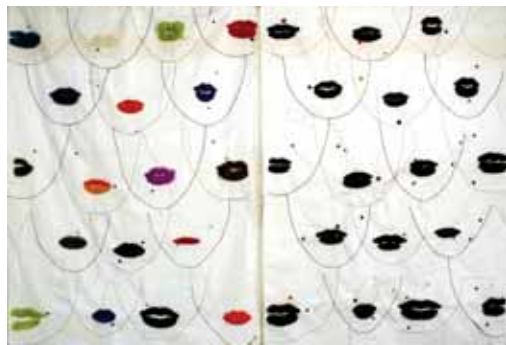
Bok Im Kim
"Whisper", Pigment on
rice paper, 22.5" x 55", 2014



Eunhee Dickerson
"Light reflecting", Oil & oil pastel on canvas, 36" x 48", 2015



In Sook Lee
"My dreams come true"
Acrylic on Canvas, 36" x 60"
2016



Jihee Kang
"Mole is something more 2016", Muslin, wool, thread, and
graphite, 24" x 30" (Each) diptych



Myungsook Ryu Kim
"Forgotten Forest", Acrylic on canvas, 24" x 30",
2016



Kyungsuk Lee
"U in I in U (series A11-2)", Oil, Mixed
media on canvas, 24"x24", 2011



Eunjeon Kim
"Moon Jar I", Ceramic & Acrylic paint on
Wood, 24"x24", 2015



Myoung Won Kwon
"Face of the Nation", Rice
paper & ink, 34.6" x 52.4", 2015



Eunmee Chung
"Color study 1", Digital photograph, 47" x 27.5", 2011



Junghwa Kim Paik
"Infinity I", Sterling silver, 24k kumboo,
4"W x 3"H x 2"D, 2016



Kwang Ho Kim
"South Korea National Anthem"
Rice paper & ink, 48" x 48", 2016



Han Hwangbo
"Loblolly Garden", Acrylic on Canvas
30" x 30", 2016



Min Sun Oh
"Timeless Fall", Oriental
painting on hanji, 20" x 27"
2016



Ok Ji Chung
"Cherry Blossom", Oil on Canvas, 20" x 30", 2015



Serena Yeo
"Nonsensical Dream", Acrylic on canvas, 36" x 36",
2014

